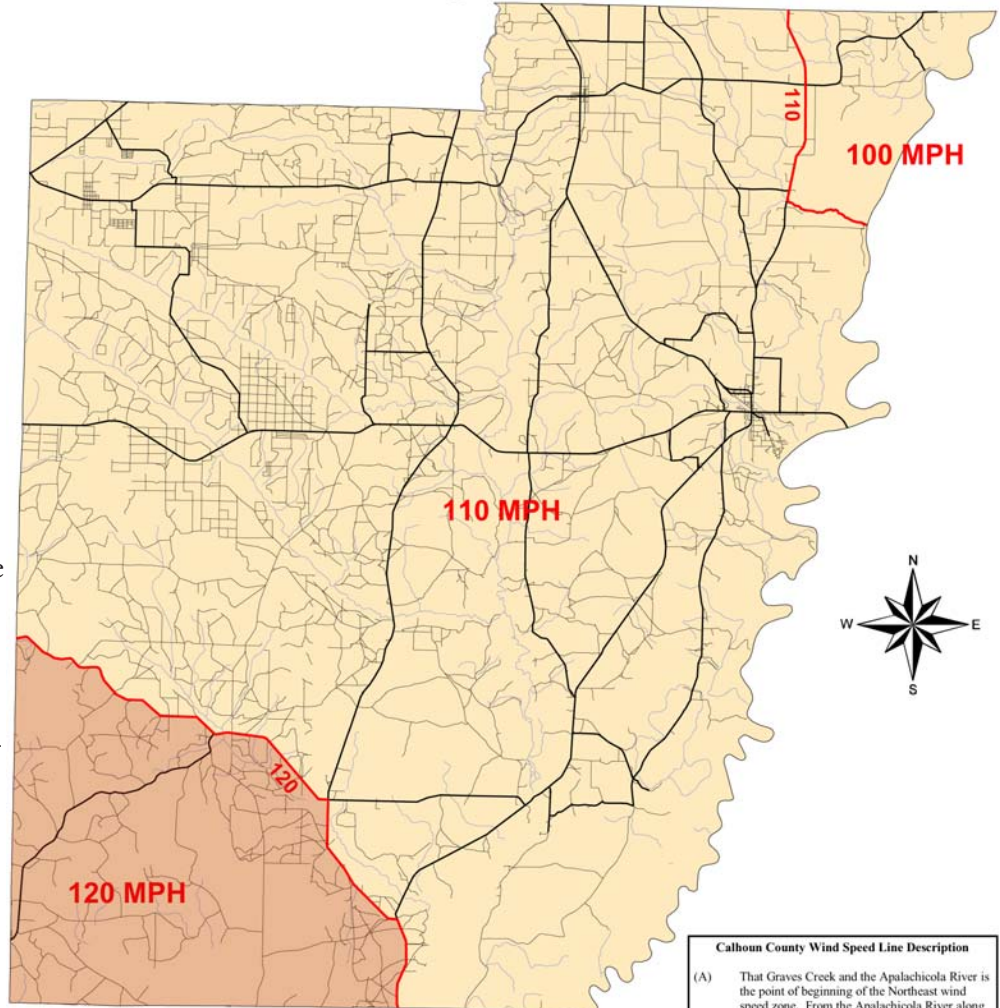


Calhoun County Wind Speed Lines

The *Extreme Weather Skylights* from Sun-Tek, our most recent addition to a family of high quality skylights, has the widest and most complete range of hurricane, tornado, high velocity and impact units of any skylight manufacturer to date !

- These high impact & wind velocity units are available for 120 mph (or greater) wind zones. Sun-Tek's standard line will satisfy all other zones.
- From the Sun-Tek Tube... to insulated Classic Glass... to Polycarbonate, Sun-Tek can offer the right application for any wind zone requirement.
- Concerned about future coastal zones ? - We are confident you will not need to go anywhere but to Sun-Tek's *Extreme Weather* line to satisfy all your extreme weather skylight needs.



4 2 0 4 Miles

Calhoun County Wind Speed Lines

-  Calhoun County Wind Speed Lines
-  Major Roads
-  USGS 1:24,000 Roads
-  Streams
-  County Boundary

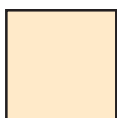
Calhoun County Wind Speed Line Description

- (A) That Graves Creek and the Apalachicola River is the point of beginning of the Northeast wind speed zone. From the Apalachicola River along Graves Creek, West to Highway 69, then North on Graves Creek and Highway 69, turn North to Jackson County Line.
- (B) The wind speed zone North of Graves Creek and East of Highway 69 is one hundred (100) miles per hour.
- (C) The wind speed zone South of Graves Creek and West of Highway 69 is one hundred-ten (110) miles per hour.
- (D) Highway 71 is the point of beginning of the Southwest wind speed zone. From Highway 71 proceed North to Highway 73, then North on Highway 73 to County Road 392, thence proceed West on County Road 392 and County Road No. 10 to the Bay County line.
- (E) The wind speed zone East of Highway 71 and Highway 73, then North of Highway 392 and County Road No. 10 is one hundred-ten (110) miles per hour.
- (F) The wind speed zone West of Highway 71 and Highway 73, then North of Highway 392 and County Road No. 10 is one hundred twenty (120) miles per hour.

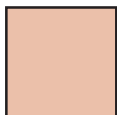
Ordinance Adopted July 2, 2002
Effective July 2, 2002

TESTED ?

The Sun-Tek *Extreme Weather Skylights* have passed the strictest testing of the Metro Dade approval process and meet or exceed all Florida Building Codes.



Satisfied by conventional Sun-Tek Classic, Dura & Sun-Tek Tube skylight systems



Requires Sun-Tek *Extreme Weather* line of High Wind & Impact skylight systems for building code requirements

