

The *Extreme Weather Skylights* from Sun-Tek, our most recent addition to a family of high quality skylights, has the widest and most complete range of hurricane, tornado, high velocity and impact units of any skylight manufacturer to date !

- These high impact & wind velocity units are available for 120 mph (or greater) wind zones. Sun-Tek's standard line will satisfy all other zones.
- From the Sun-Tek Tube... to insulated Classic Glass... to Polycarbonate, Sun-Tek can offer the right application for any wind zone requirement.
- Concerned about future coastal zones ? - We are confident you will not need to go anywhere but to Sun-Tek's *Extreme Weather* line to satisfy all your extreme weather skylight needs.

TESTED ?
The Sun-Tek *Extreme Weather Skylights* have passed the strictest testing of the Metro Dade approval process and meet or exceed all Florida Building Codes.

Citrus County Wind Speed Lines

**120 MPH
ASCE 7-98**

Citrus County Wind Speed Lines Description

Wind-borne Debris Region The Wind-borne Debris Region, as referred to in the Florida Building Code, is hereby established within the unincorporated area of Citrus County to be all lands lying seaward of the most land ward reach of the velocity zone (v-zone) contour lines as depicted on the Flood Insurance Rate Map (FIRM).

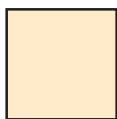
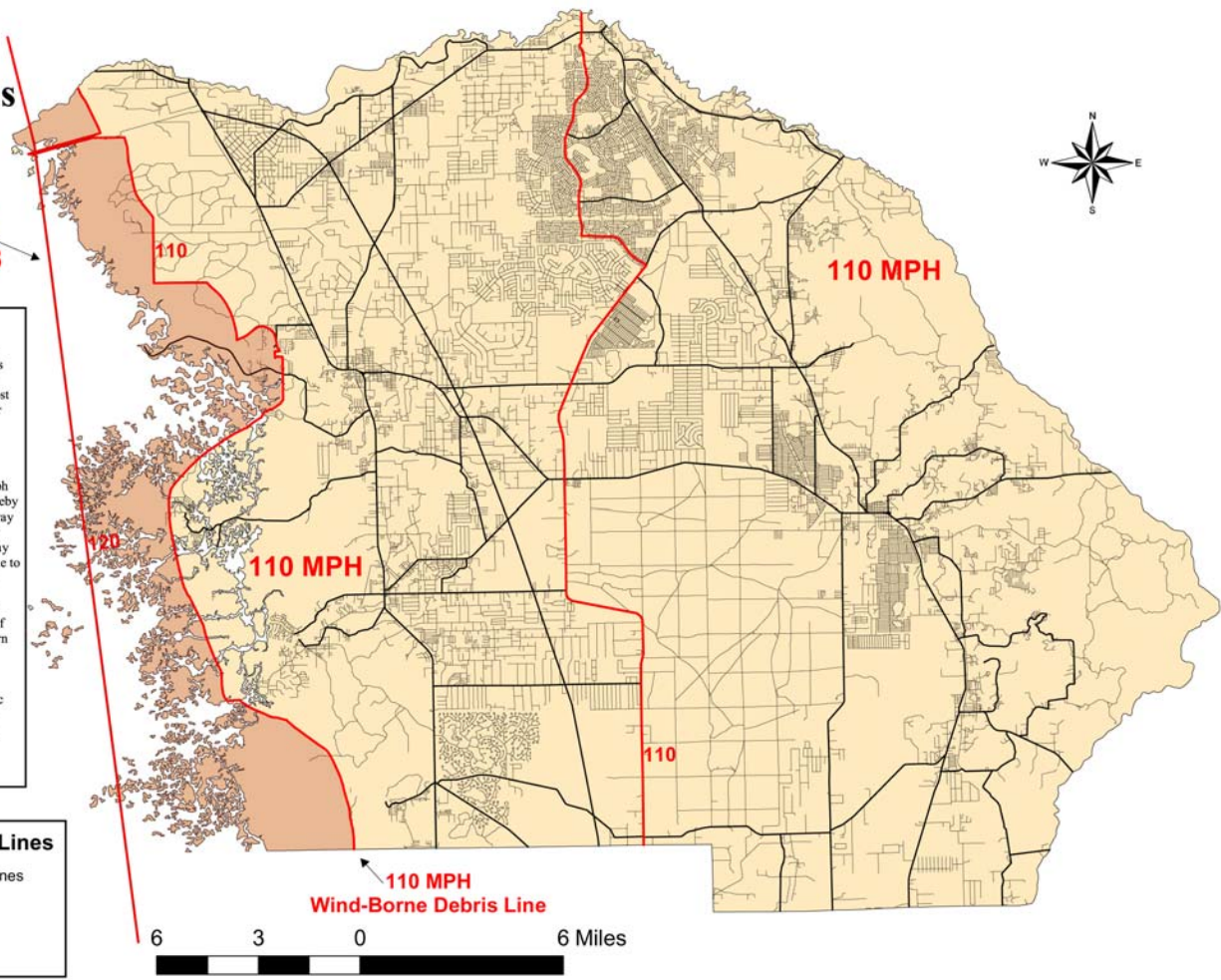
100mph/110mph Wind-Zone Transition Line The geographic identifiers delineating the 100mph/110mph Wind Zone Transition Line for Citrus County are hereby established as the centerline of the CR 491 right-of-way (ROW) from the southern boundary of Citrus County running northward to the centerline of the right-of-way for W. Hampshire Blvd., and following said centerline to N. Elkam Blvd.; then following said centerline of N. Elkam Blvd., northward of CR 488, following the centerline of the CR 488 right-of-way to North River Garden Drive, then northward along said centerline of North River Garden Drive right-of-way to the northern boundary of Citrus County.

However, for the purpose of wind-resistant design structures, Citrus County hereby establishes the "Basic Wind Speed" (nominal 3-second gust) to be 110 mph throughout the unincorporated area of Citrus County.

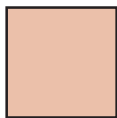
Ordinance Adopted December 18, 2001
Effective January 1, 2002

Citrus County Wind Speed Lines

- Citrus County Wind Speed Lines
- Major Roads
- USGS 1:24,000 Roads
- County Boundary



Satisfied by conventional Sun-Tek Classic, Dura & Sun-Tek Tube skylight systems



Requires Sun-Tek *Extreme Weather* line of High Wind & Impact skylight systems for building code requirements

