



The *Extreme Weather Skylights* from Sun-Tek, our most recent addition to a family of high quality skylights, has the widest and most complete range of hurricane, tornado, high velocity and impact units of any skylight manufacturer to date !

- These high impact & wind velocity units are available for 120 mph(or greater) wind zones. Sun-Tek's standard line will satisfy all other zones.
- From the Sun-Tek Tube... to insulated Classic Glass... to Polycarbonate, Sun-Tek can offer the right application for any wind zone requirement.
- Concerned about future coastal zones ? - We are confident you will not need to go anywhere but to Sun-Tek's *Extreme Weather* line to satisfy all your extreme weather skylight needs.

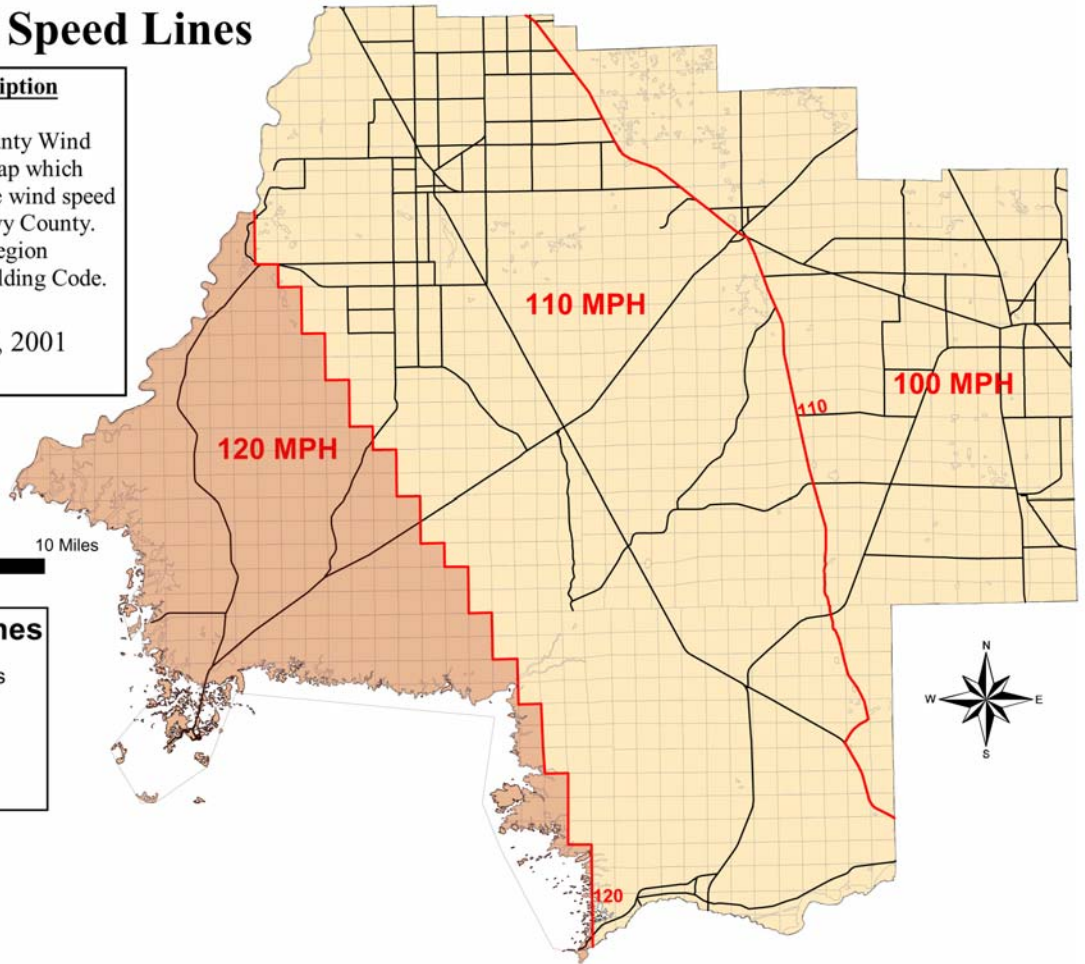
TESTED ?
 The Sun-Tek *Extreme Weather Skylights* have passed the strictest testing of the Metro Dade approval process and meet or exceed all Florida Building Codes.

Levy County Wind Speed Lines

Levy County Wind Speed Line Description

Wind Line locations taken from the Levy County Wind Borne Debris Region & Basic Wind Speed Map which established the geographical boundaries of the wind speed zones and the wind borne debris region in Levy County. The wind speed lines and wind borne debris region coincides with Figure 1606 of the Florida Building Code.

Ordinance Adopted December 18, 2001
 Effective March 1, 2002



Levy County Wind Speed Lines

- Levy County Wind Speed Lines
- Major Roads
- Public Land Survey System
- County Boundary

- Satisfied by conventional Sun-Tek Classic, Dura & Sun-Tek Tube skylight systems
- Requires Sun-Tek *Extreme Weather* line of High Wind & Impact skylight systems for building code requirements

