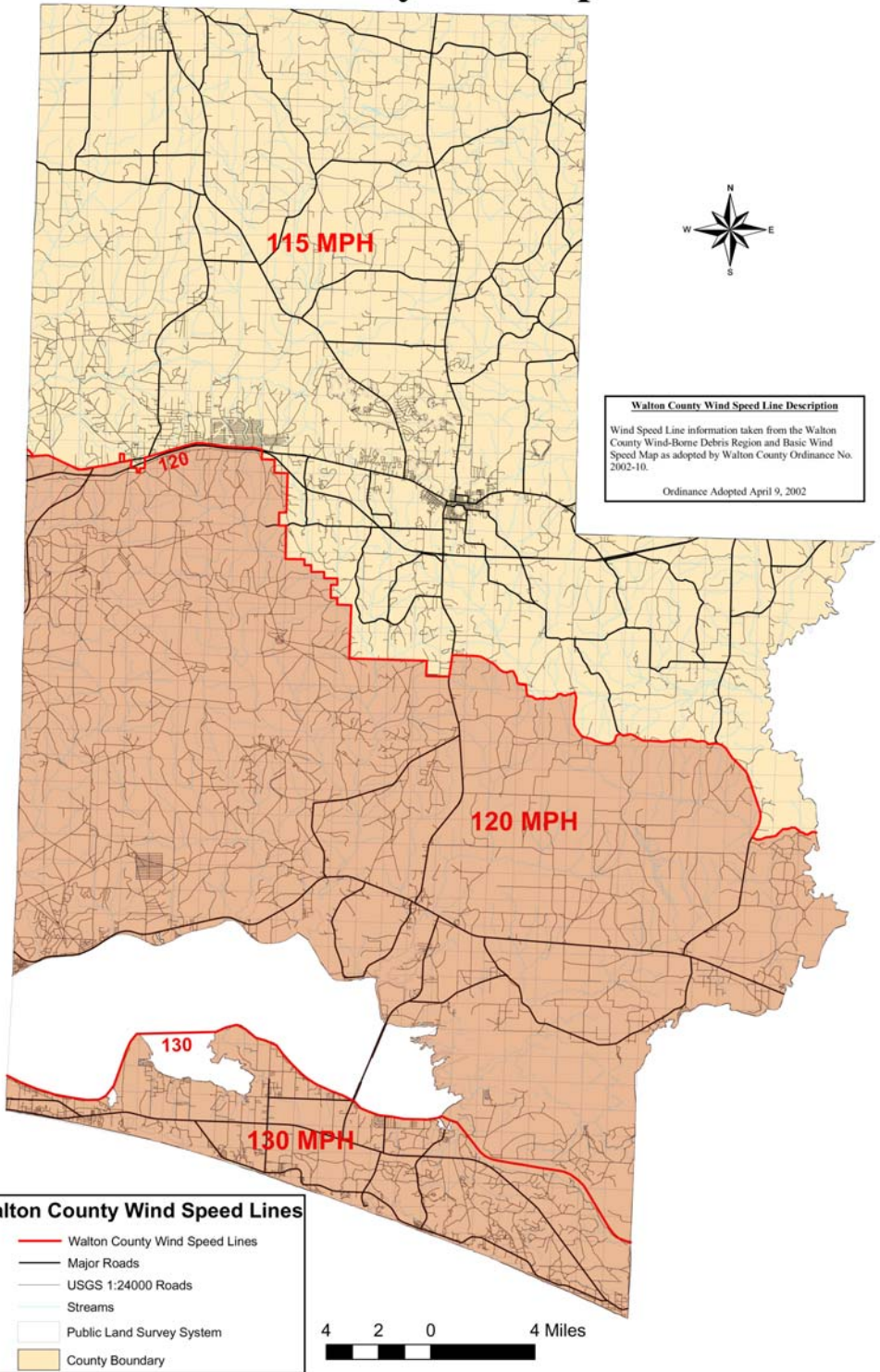




Walton County Wind Speed Lines

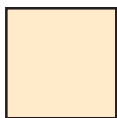
The *Extreme Weather Skylights* from Sun-Tek, our most recent addition to a family of high quality skylights, has the widest and most complete range of hurricane, tornado, high velocity and impact units of any skylight manufacturer to date !

- These high impact & wind velocity units are available for 120 mph (or greater) wind zones. Sun-Tek's standard line will satisfy all other zones.
- From the Sun-Tek Tube... to insulated Classic Glass... to Polycarbonate, Sun-Tek can offer the right application for any wind zone requirement.
- Concerned about future coastal zones ? - We are confident you will not need to go anywhere but to Sun-Tek's *Extreme Weather* line to satisfy all your extreme weather skylight needs.

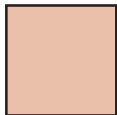


TESTED ?

The Sun-Tek *Extreme Weather Skylights* have passed the strictest testing of the Metro Dade approval process and meet or exceed all Florida Building Codes.



Satisfied by conventional Sun-Tek Classic, Dura & Sun-Tek Tube skylight systems



Requires Sun-Tek *Extreme Weather* line of High Wind & Impact skylight systems for building code requirements

