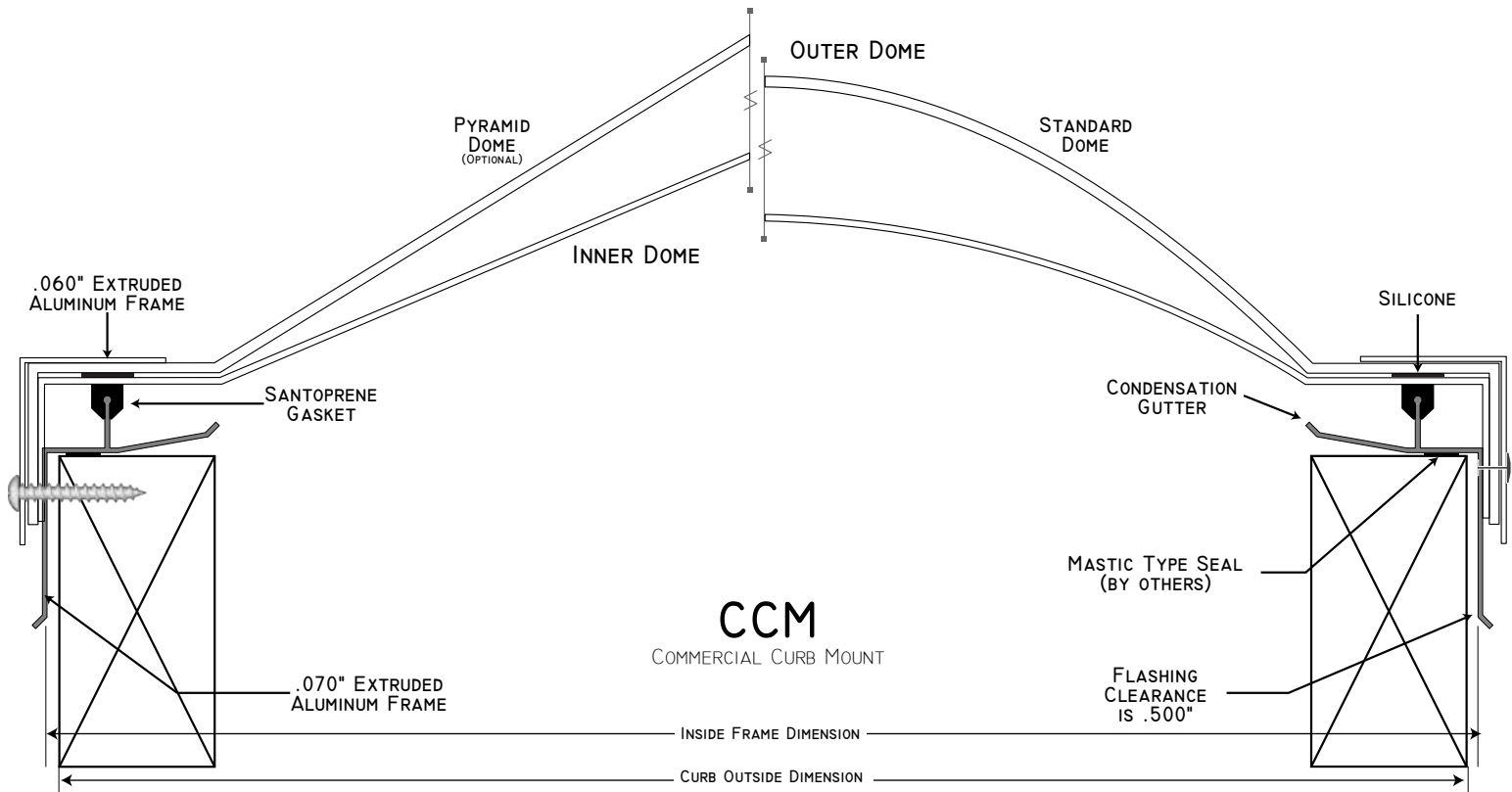


# Commercial Product Data Sheet



## PROFILE



## SPECIFICATIONS

Skylights shall be Sun-Tek model CCM manufactured by Sun-Tek Manufacturing, 10303 General Drive, Orlando, FL. 32824

Aluminum retaining angle shall be fabricated from 6063-T5 aluminum with a minimum thickness of .060 inch. All corners shall be miter cut and welded using the TIG welding process.

CCM extruded aluminum inner frame with integral condensation gutter. Extruded aluminum inner frame shall be fabricated from 6063-T5 aluminum with a minimum thickness of .070 inch. All corners shall be miter cut and welded using the TIG welding process. CCM extruded aluminum inner frame with integral condensation gutter separated from glazing by santoprene gasket. Inner frame shall have weep holes for drainage to the exterior.

Polycarbonate monolithic, formable, transparent or translucent sheets with good weather resistance and excellent impact resistance. Single dome application, outer dome .118 minimum thickness unless otherwise specified by architect. Double dome application, outer dome .118 thickness unless otherwise specified by architect. Inner dome .080 minimum thickness. Single and double dome applications, the domes shall extend, vertically downward, over the exterior side of the inner frame to a minimum of one (1) inch. Outer and inner dome shall be sealed together with silicone.

Outer and inner dome meet the following:

- ASTM D 635
- ASTM D 638
- ASTM D 1929
- ASTM E 84
- ASTM G 26



Sun-Tek Manufacturing • 10303 General Drive • Orlando, Florida 32824  
ph: 800.334.5854 • fx: 800.331.6607 • web: [www.Sun-Tek.com](http://www.Sun-Tek.com) • eMail: [CustomerService@Sun-Tek.com](mailto:CustomerService@Sun-Tek.com)



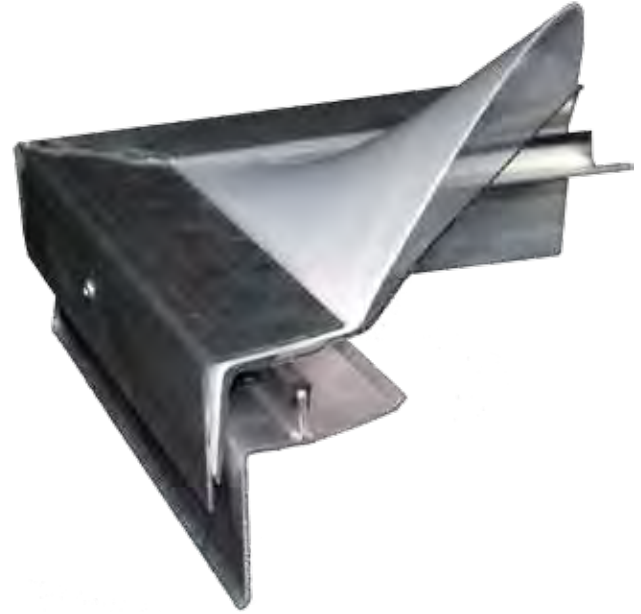
## SPECIFICATIONS (CON'T)

The Exterior aluminum extruded retaining angle, outer dome, and inner dome (in double dome applications) and extruded aluminum inner frame, for both CCM and CCMT shall be fastened together by 0.1875 diameter aluminum rivets with stainless steel washer. All fasteners used for securing the skylight to the structure shall be provided by others.

CCM shall be tested to AAMA/WDMA/CSA 101/I.S.2/A440-08, NAFS North American Fenestration Standard/Specification for windows, doors and skylights. Includes: ASTM E283-04, ASTM E547-00 and ASTM E330-02. Standard and custom sizes up to 40100 (ID 49.1875 x 118.5) achieved +/- 40 psf design pressure. The Primary Product Designator is Class CW-PG40 1291 x 3045 mm (50.8125 x 119.875)-SKP/RW.

### PLASTIC SKYLIGHT ASSEMBLIES:

- Factory assembled curb mounted unit skylight consisting polycarbonate glazing attached to outer and inner extruded frames made from 6063-T5 aluminum.
- All unit skylights to be factory assembled and factory glazed.
- All units shall have integral condensation gutters that drain to the exterior.
- Size: See schedule.
- Polycarbonate outer dome minimum 0.118 thickness. Inner dome polycarbonate dome minimum 0.080 thickness.
- Outer and inner domes; Transparent Bronze, Clear, translucent White or other specified by architect.
- Curbs: Made by others.



### AVAILABLE OPTIONS

