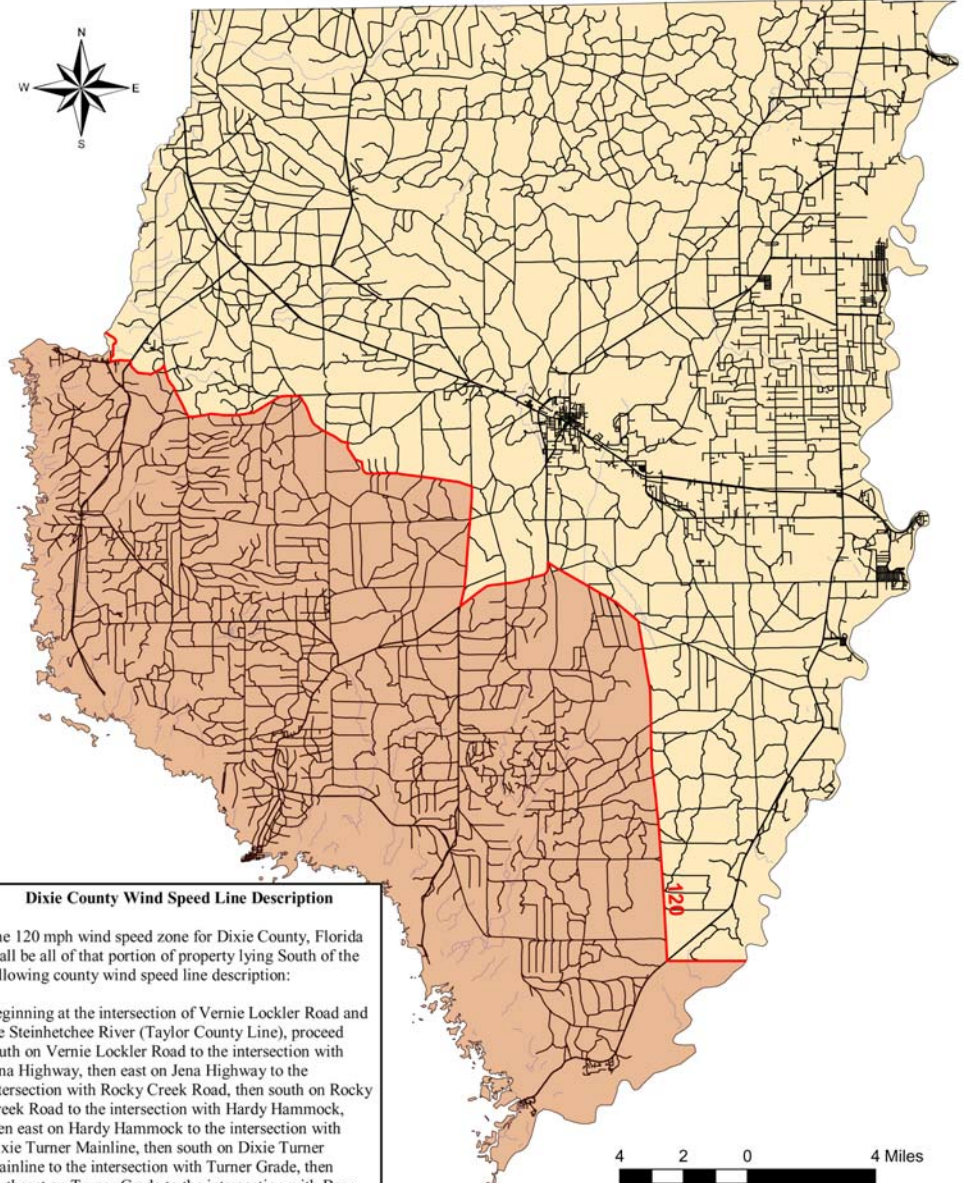
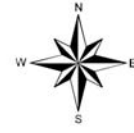


Dixie County Wind Speed Line

The *Extreme Weather Skylights* from Sun-Tek, our most recent addition to a family of high quality skylights, has the widest and most complete range of hurricane, tornado, high velocity and impact units of any skylight manufacturer to date !

- These high impact & wind velocity units are available for 120 mph (or greater) wind zones. Sun-Tek's standard line will satisfy all other zones.
- From the Sun-Tek Tube... to insulated Classic Glass... to Polycarbonate, Sun-Tek can offer the right application for any wind zone requirement.
- Concerned about future coastal zones ? - We are confident you will not need to go anywhere but to Sun-Tek's *Extreme Weather* line to satisfy all your extreme weather skylight needs.



Dixie County Wind Speed Line Description

The 120 mph wind speed zone for Dixie County, Florida shall be all of that portion of property lying South of the following county wind speed line description:

Beginning at the intersection of Vernie Lockler Road and the Steinhatchee River (Taylor County Line), proceed south on Vernie Lockler Road to the intersection with Jena Highway, then east on Jena Highway to the intersection with Rocky Creek Road, then south on Rocky Creek Road to the intersection with Hardy Hammock, then east on Hardy Hammock to the intersection with Dixie Turner Mainline, then south on Dixie Turner Mainline to the intersection with Turner Grade, then northeast on Turner Grade to the intersection with Bear Bay Mainline, then north on Bear Bay Mainline to the intersection with Township Grade Road, then east on Township Grade Road to the intersection with Perry Grade, then southeast on Perry Grade to the intersection with Brooks Scanlon, then southeast on Brooks Scanlon to the intersection with County Road 351, then northeast on County Road 351 to the intersections with Putnam Mainline, then southeast and south on Putnam Mainline to the intersection with County Road 349, then due east to the Suwannee River and the Levy County Line.

The portion of Dixie County lying North of this description shall be governed under the 110 mph wind speed zone.

Ordinance Passed and Adopted April 4, 2002

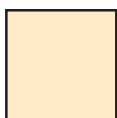


Dixie County Wind Speed Line

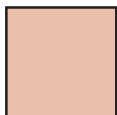
- Dixie Wind Speed Line
- Major Roads
- USGS 1:24,000 Roads
- Streams
- County Boundary

TESTED ?

The Sun-Tek *Extreme Weather Skylights* have passed the strictest testing of the Metro Dade approval process and meet or exceed all Florida Building Codes.



Satisfied by conventional Sun-Tek Classic, Dura & Sun-Tek Tube skylight systems



Requires Sun-Tek *Extreme Weather* line of High Wind & Impact skylight systems for building code requirements