

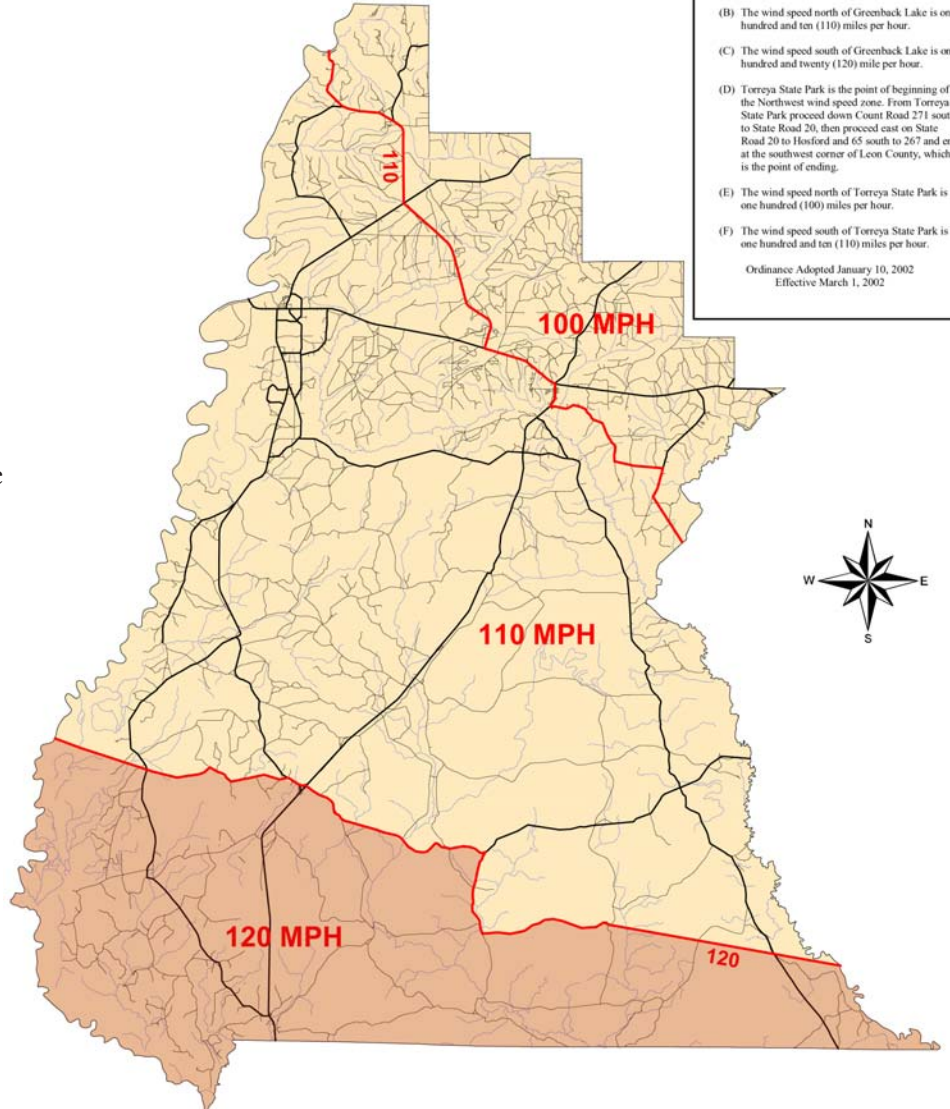
The *Extreme Weather Skylights* from Sun-Tek, our most recent addition to a family of high quality skylights, has the widest and most complete range of hurricane, tornado, high velocity and impact units of any skylight manufacturer to date !

- These high impact & wind velocity units are available for 120 mph (or greater) wind zones. Sun-Tek's standard line will satisfy all other zones.
- From the Sun-Tek Tube... to insulated Classic Glass... to Polycarbonate, Sun-Tek can offer the right application for any wind zone requirement.
- Concerned about future coastal zones ? - We are confident you will not need to go anywhere but to Sun-Tek's *Extreme Weather* line to satisfy all your extreme weather skylight needs.

TESTED ?

The Sun-Tek *Extreme Weather Skylights* have passed the strictest testing of the Metro Dade approval process and meet or exceed all Florida Building Codes.

Liberty County Wind Speed Lines



Liberty County Wind Speed Lines Description

(A) That Greenback Lake is the point of beginning of the Southwest wind speed zone. From Greenback Lake travel west to east down Forest Road 113 to Wilma, Florida, then from Wilma on Forest Road 13 across to Twinpoles Hunting Camp, which intersects there with Forest Road 170, then go south to Mud Swamp and New River, intersect there with Forest Road 83 over to Gum Bay, then proceed southeast across Gum Bay and Forest Road 125 and Thousand Yard Bay to the point of ending, which is Sand Born Lake and County Road 22.

(B) The wind speed north of Greenback Lake is one hundred and ten (110) miles per hour.

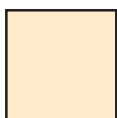
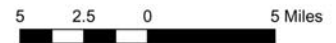
(C) The wind speed south of Greenback Lake is one hundred and twenty (120) mile per hour.

(D) Torrey State Park is the point of beginning of the Northwest wind speed zone. From Torrey State Park proceed down County Road 271 south to State Road 20, then proceed east on State Road 20 to Horsford and 65 south to 267 and end at the southwest corner of Leon County, which is the point of ending.

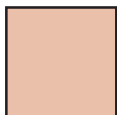
(E) The wind speed north of Torrey State Park is one hundred (100) miles per hour.

(F) The wind speed south of Torrey State Park is one hundred and ten (110) miles per hour.

Ordinance Adopted January 10, 2002
Effective March 1, 2002



Satisfied by conventional Sun-Tek Classic, Dura & Sun-Tek Tube skylight systems



Requires Sun-Tek *Extreme Weather* line of High Wind & Impact skylight systems for building code requirements

